

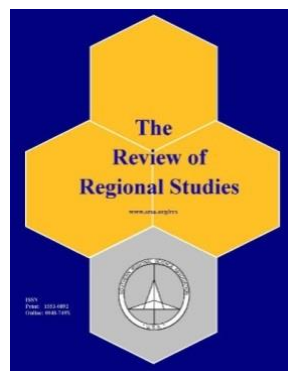
---

**55<sup>TH</sup> MEETING OF THE  
SOUTHERN REGIONAL SCIENCE ASSOCIATION**

---

**Conference Program  
2016**

**March 31 – April 2, 2016  
Washington, D.C.  
Key Bridge Marriott, Arlington, VA**



## SRSA Officers, 2015-2016

### **President**

Santiago Pinto, Federal Reserve Bank of Richmond

### **President-Elect and Program Chair**

Brian Cushing, West Virginia University

### **Immediate Past President**

Steven Deller, University of Wisconsin-Madison

### **Co-Executive Directors**

John Spring, Jr., Secretary, Administrative Office of the  
United States Courts

Randall Jackson, Treasurer, West Virginia University

### **Nominations Chair**

Michael Lahr, Rutgers, The State University of New Jersey

### **Honors Chair and Graduate Student Papers**

Dan Rickman, Oklahoma State University

### **Council Members**

Don Lacombe, West Virginia University

John Winters, Oklahoma State University

Tony Grubescic, Oregon State University

Carlianne Patrick, Georgia State University

Susane Leguizamon, Tulane University

William Bowen, Cleveland State University

### **Editors, *The Review of Regional Studies***

Mark Burkey, North Carolina A&T State University

Michael Lahr, Rutgers, The State University of New Jersey

Amanda Ross, West Virginia University

### **Conference Committee 2016**

Brian Cushing (Chair), West Virginia University

Richard Cebula, Jacksonville University

John Connaughton, University of North Carolina-Charlotte

John Deskins, West Virginia University

Randall Jackson, West Virginia University

John Kort, Retired (BEA/ERS)

Jeffrey O'Hara, Agricultural Marketing Service, USDA

Santiago Pinto, Federal Reserve Bank of Richmond

Juan Sayago, West Virginia University

Judith Stallmann, University of Missouri

Brian Whitacre, Oklahoma State University

## Past Presidents

Steven Deller - University of Wisconsin-Madison

Michael L. Lahr - Rutgers, The State University of New Jersey

Dan Rickman - Oklahoma State University

Douglas P. Woodward - University of South Carolina, Columbia

Randall W. Jackson - RRI, West Virginia University

John E. Connaughton - University of North Carolina, Charlotte

Peter V. Schaeffer - West Virginia University

Nancy E. White - Bucknell University

David McGranahan - ERS, USDA

Cynthia Rogers - University of Oklahoma

Mark Partridge - The Ohio State University

Stephen M. Smith - Pennsylvania State University

Robert Gibbs - ERS, USDA

Frank Hefner - College of Charleston

John Rees - University of North Carolina, Greensboro

Judith Stallmann - University of Missouri

Andy Bernat - BEA, US Dept. of Commerce

David Barkley - Clemson University

David Mulkey - University of Florida

Carol T. West - University of Florida

Edward J. Malecki - The Ohio State University

John R. Kort - BEA, US Dept. of Commerce

Thomas G. Johnson - University of Missouri

Andrew M. Isserman - University of Illinois, Urbana-Champaign

Mark S. Henry - Clemson University

David Rasmussen - Florida State University

Joseph Cartwright - US Dept. of Defense

William Latham - University of Delaware

Hugh W. Knox - BEA, US Dept. of Commerce

Barry Moriarty - University of North Carolina

James C. Hite - Clemson University

A. Ray Grimes - KPMG LLP

William J. Serow - Florida State University

Richard Olsen - Applied Business Research

John H. Cumberland - University of Maryland

Niles M. Hansen - University of Texas, Austin

Lowell D. Ashby - US Dept. of Commerce

Shirley F. Weiss - University of North Carolina

Monroe Newman - Pennsylvania State University

William H. Miernyk - RRI, West Virginia University

James M. Stepp - Clemson University

Alan R. Winger - FHLB of Cincinnati

William A. Schaffer - Georgia Institute of Technology

Robert T. Miki - US Dept. of Commerce

## Fellows

Walter Isard - Cornell University  
Edgar S. Dunn - University of Florida  
William H. Miernyk - RRI, West Virginia University, 1981  
Lowell D. Ashby - BEA, US Dept. of Commerce  
Rutledge Vining - University of Virginia  
F. Stuart Chapin, Jr. - University of North Carolina  
Charles L. Leven - Northwestern University, 1991  
William A. Schaffer - Georgia Institute of Technology, 1992  
Niles M. Hansen - University of Texas, Austin, 1993  
Brian Berry - University of Texas, Dallas, 1995  
James Hite - Clemson University  
John H. Cumberland - University of Maryland, 2000  
Thomas Johnson - University of Missouri, Columbia, 2002  
Mark S. Henry - Clemson University, 2004  
Hugh Knox - BEA, US Dept. of Commerce, 2006  
David Barkley - Clemson University, 2008  
Henry (Chip) Herzog - University of Tennessee, 2008  
John Kort - ERS, USDA, 2009  
Judith I. Stallmann - University of Missouri, 2009  
Andrew M. Isserman - University of Illinois, Urbana -  
Champaign, 2010  
Brian J. Cushing - West Virginia University, 2011  
Nancy White - Bucknell University, 2012  
Mark Partridge - Ohio State University, 2013  
Dan Rickman - Oklahoma State University, 2013  
James P. LeSage - Texas State University, 2014  
Randall W. Jackson - RRI, West Virginia University, 2015

## Announcements

### Exhibitors

Visit the exhibit tables in the Francis Scott Key room:

1. Council for Community and Economic Research
2. IMPLAN
3. Regional Research Institute
4. Scholars Strategy Network
5. USDA – Agricultural Marketing Service
6. USDA – Economic Research Service

### Coming to SRSA for 2017!!

#### *Undergraduate Research Poster Sessions*

Do you work with undergraduates who are interested in regional science? If so, look for an announcement in the coming months about new opportunities for undergraduates at SRSA, beginning with the 2017 SRSA conference!

### Sponsors of Refreshment Breaks

Thank you to our four Silver Sponsors who provided financial support for the three refreshment breaks:

- 1) Bureau of Business and Economic Research, West Virginia University
- 2) Edward J. Bloustein School of Planning and Public Policy, Rutgers University
- 3) IMPLAN
- 4) Regional Research Institute, West Virginia University

### Register for SRSA News

If you have not done so already, please go to [www.SRSA.org](http://www.SRSA.org) and register for the SRSA News e-mail list.

Sponsored by:



Sponsored by:



# Welcome to SRSA's 55<sup>th</sup> Conference

There may have been a number of changes since you last viewed the program. Verify the timing and location of your papers and sessions. The Participant Index located on pages 54-57 shows when and in what session you are scheduled.

The following provides a guide to the etiquette for all sessions:

- Each paper presentation generally is allotted twenty minutes.
- Discussants should prepare five minutes of remarks, allowing five minutes for questions and comments from other attendees.
- Session chairs and presenters should arrive ten minutes early for audio/visual preparation.
- It is the responsibility of the session chair to ensure a laptop will be available in the session.
- Session chairs should preserve the order of the session to facilitate attendees who may be attempting to hear papers in concurrent sessions.
- Presenters and discussants should remain for the entire session.

## 55<sup>TH</sup> SRSA ANNUAL MEETING: PROGRAM OVERVIEW

### Thursday, March 31

9:00am-12:00pm

Session 1: NE-1049 Business Meeting: Washington (By Invitation Only)

12:00pm-5:00pm

Registration: Francis Scott Key

3:30pm-5:30pm

Session 2A: State Forecasts: Georgetown - Salon B

Session 2B: Federal Organizations 1: Research Support:  
Georgetown – Salon C

6:30pm-9:00pm

SRSA Council Meeting: Capitol View Ballroom (14<sup>th</sup> Floor) – Salon 1 (By Invitation Only)

### Friday, April 1

7:00am-5:00pm

Registration: Francis Scott Key

7:00am-8:00am

Continental Breakfast: Francis Scott Key

8:00am-10:00am

Session 3A: Regional Research Frontiers 1: Washington

Session 3B: Broadband Policy: Georgetown - Salon A

Session 3C: Local Food Systems: Georgetown - Salon B

Session 3D: Frontiers in Spatial Analysis: Jefferson

Session 3E: CGE Modeling: Monroe

Session 3F: Local Reaction to Natural or Man-Made Disasters:  
Georgetown - Salon C

10:00am-10:30am

Refreshment Break: Francis Scott Key

## Saturday, April 2

10:30am-12:00pm

Session 4A: Federal Organizations 2: Supporting Regional and Local Development through Programs and Research: Georgetown - Salon A

Session 4B: Publishing in Regional Science Journals: Monroe

Session 4C: How Housing Markets Interact with Local and Individual Economic Change: Georgetown - Salon C

Session 4D: Migration 1: Georgetown - Salon B

Session 4E: Small Business and Entrepreneurs 1: Jefferson

Session 4F: Research on Rural Economic Issues: Washington

12:15pm-1:45pm

**Awards Luncheon: Capital View Ballroom (14<sup>th</sup> Floor)**

2:00pm-4:00pm

Session 5A: Federal Organizations 3: Research, Data, and Opportunities with Federal Statistical Agencies: Monroe

Session 5B: Marginalization, Adaptation, and Assistance: The Journey of those Who Are Left Behind: Washington

Session 5C: Researching the Effect of State and Local Taxation on Economic Growth: Georgetown - Salon A

Session 5D: Water Systems, Growth, and Ecological Issues: Georgetown - Salon B

Session 5E: Input-Output 1: Jefferson

Session 5F: The Gifts and Challenges that Nature Offers for Local Economies: Georgetown - Salon C

4:00pm-4:30pm

Refreshment Break: Francis Scott Key

4:30pm-6:00pm

Session 6A: Federal Organizations 4: Regional Research at the Federal Reserve Bank: Jefferson

Session 6B: Studies on Local and Regional Economic Growth: Georgetown - Salon A

Session 6C: Small Business and Entrepreneurs 2: Washington

Session 6D: Perspectives on the Structure and Development of Regions: Georgetown - Salon B

Session 6E: Input-Output 2: Monroe

Session 6F: Migration 2: Georgetown - Salon C

6:30pm-8:30pm

**Reception: Capitol View Ballroom (14<sup>th</sup> Floor)**

7:00am-12:00pm

Registration: Francis Scott Key

7:00am-8:00am

Continental Breakfast: Francis Scott Key

8:00am-10:00am

Session 7A: Applications of Spatial Econometric Analysis: Georgetown - Salon A

Session 7B: Small Business and Entrepreneurs 3: Monroe

Session 7C: Regional Research Frontiers 2: Washington

Session 7D: Spatial Clustering: Georgetown - Salon B

Session 7E: Input-Output 3: Jefferson

Session 7F: Transportation: Georgetown - Salon C

10:00am-10:30am

Refreshment Break: Francis Scott Key

10:30am-12:00pm

Session 8A: Labor Market Analysis: Jefferson

Session 8B: Learning from Higher Learning: Georgetown - Salon A

Session 8C: Small Business and Entrepreneurs 4: Monroe

Session 8D: Understanding Urban/Spatial Structure: Washington

Session 8E: Measures of Income and Output for States and Metro Areas: Georgetown - Salon B

Session 8F: New Approaches to Understand Impacts of Social Issues: Georgetown - Salon C

12:15pm-1:45pm

**Presidential Luncheon and SRSA Business Meeting: Capitol View Ballroom (14<sup>th</sup> Floor)**

2:00pm-4:00pm

Session 9A: Regional Research Frontiers 3: Jefferson

Session 9B: Hospitals, Health, and Local Economic Development: Georgetown - Salon B

Session 9C: New Perspectives on the Determinants of Local Government Revenues and Expenditures: Georgetown - Salon C

Session 9D: Input-Output 4: Monroe

4:00pm

**55<sup>th</sup> SRSA Annual Meeting Ends**

## Thursday, March 31

### **9:00 am – 12:00 pm (noon)**

#### **NE-1049 BUSINESS MEETING**

**Room:** Washington

**Organizer:** Yong Chen, Oregon State University

**(By invitation only)**

### **3:30 pm – 5:30 pm**

#### **2A STATE FORECASTS**

**Room:** Georgetown - Salon B

**Chair:** William Bowen, Cleveland State University

#### ***The North Carolina Economic Outlook***

**John Connaughton**, University of North Carolina-Charlotte

#### ***The Oklahoma Economic Outlook***

**Dan Rickman**, Oklahoma State University

#### ***The South Carolina Economic Outlook for 2016***

**Joseph Von Nessen**, University of South Carolina-Columbia

#### ***The West Virginia Economic Outlook***

**Brian Lego**, West Virginia University

### **2B FEDERAL ORGANIZATIONS 1: RESEARCH SUPPORT**

**Room:** Georgetown - Salon C

**Chair:** Judith Stallmann, University of Missouri

#### **Panel:**

**Cheryl Eavey**, National Science Foundation

**Mark Shroder**, US Department of Housing and Urban Development

**Jonathan Porat**, US Small Business Administration

### **6:30 pm – 9:00 pm**

#### **SRSA COUNCIL MEETING**

**Room:** Capitol View Ballroom – Salon 1  
**(Dinner; By Invitation Only)**

## Friday, April 1

### **7:00 am – 8:00 am**

#### **CONTINENTAL BREAKFAST**

**Francis Scott Key Room**



---

## **8:00 am – 10:00 am**

### **3A REGIONAL RESEARCH FRONTIERS 1**

**Room:** Washington

**Chair:** Randall Jackson, West  
Virginia University

#### ***The Future of Agglomeration Research***

**Douglas Woodward**, University of South  
Carolina

**Carlianne Patrick**, Georgia State University

#### ***Regional Policy and Fiscal Competition***

**Santiago Pinto**, Federal Reserve Bank of  
Richmond

#### ***Identifying Sleeping Beauties in the Lore of Regional Science***

**Rajendra Kulkarni** and **Roger Stough**,  
George Mason University

#### ***Designing Policies to Spur Economic Growth: How Regional Scientists Can Contribute to Future Policy Development and Evaluation***

**Carlianne Patrick**, Georgia State University

**Amanda Ross**, West Virginia University

**Heather Stephens**, West Virginia University

#### **Discussants:**

**Amit Batabyal**, Rochester Institute of  
Technology

**John Connaughton**, University of North  
Carolina-Charlotte

**William Schaffer**, Georgia Institute of  
Technology

**Douglas Woodward**, University of South  
Carolina

### **3B BROADBAND POLICY**

**Room:** Georgetown, Salon A

**Chair:** Susane Leguizamon, Western  
Kentucky University

#### ***Evaluation of USDA's Broadband Loan***

#### ***Program: Impacts on the Broadband Provision***

**Robert Dinterman**, North Carolina State  
University

**Mitch Renkow**, North Carolina State  
University

#### ***Broadband Un-adopters***

**Brian Whitacre**, Oklahoma State  
University

**Colin Rhinesmith**, University of Oklahoma

#### ***Internet in Native American Households***

**Peter Stenberg**, Economic Research Service,  
USDA

#### ***Estimating Willingness-to-pay for Broadband Attributes among Low-income Consumers:***

#### ***Results from the FCC Lifeline Pilot Projects***

**Hyun Ji Lee**, Oklahoma State University

**Brian Whitacre**, Oklahoma State University

#### **Discussants:**

**Tony Grubestic**, Arizona State University

**Peter Han**, Economic Research Service,  
USDA

**Younjun Kim**, University of Nebraska-  
Lincoln

**Brian Lego**, West Virginia University



### 3C LOCAL FOOD SYSTEMS

**Room:** Georgetown - Salon B

**Chair:** John Halstead, University of  
New Hampshire

***Consumers' Willingness to Pay for Locally  
Grown Produce: A Study of New Hampshire  
Residents***

***Wei Shi, John Halstead, and Ju-Chin Huang,***  
University of New Hampshire

***A Local Food Economic Impact Assessment  
Toolkit***

***Dawn Thilmany,*** Colorado State University  
***Steve Deller,*** University of Wisconsin-  
Madison  
***Becca Jablonski,*** Colorado State University

***A Typology of Local Food System Benchmarks***

***Dawn Thilmany,*** Colorado State University  
***David Shideler,*** Oklahoma State University  
***Allison Bauman,*** Colorado State University  
***Becca Jablonski,*** Colorado State University

***Trends in Direct-to-Consumer Agricultural Sales  
in the West South Central and Mountain  
Regions***

***David Shideler,*** Oklahoma State University  
***Jeffrey O'Hara,*** Agricultural Marketing  
Service, USDA

**Discussants:**

***Stephan Goetz,*** Penn State University  
***Sarah Low,*** Economic Research Service, USDA  
***Jeffrey O'Hara,*** Agricultural Marketing  
Service, USDA  
***David Swenson,*** Iowa State University

### 3D FRONTIERS IN SPATIAL ANALYSIS

**Room:** Jefferson

**Chair:** James Lesage, Texas State  
University

***Spatial Spillovers***

***Geoffrey J D Hewings,*** University of Illinois at  
Urbana-Champaign  
***Sungyup Chung,*** Bank of Korea

***A Bayesian Spatial Panel Model with  
Heterogenous Coefficients***

***James Lesage,*** Texas State University  
***Yao-Yu Chih,*** Texas State University

***On Deriving Spatial Econometric Models from  
Theory and W from Observations – an  
Application to the US Regional Knowledge  
Production Function***

***Fang Fang,*** University of Arizona  
***Sandy Dall'Erba,*** University of Illinois  
***Dongwoo Kang,*** Korean Labor Institute

***Spatial Perspective on Regional Economic  
Growth in China: Evidence from an Extended  
Neoclassic Growth Model***

***Xiangwei Sun,*** Nanchang University  
***Fei Chen,*** Nanchang University  
***Geoffrey Hewings,*** University of Illinois at  
Urbana-Champaign

**Discussants:**

***John Carruthers,*** The George Washington  
University  
***Sandy Dall'Erba,*** University of Illinois at  
Urbana-Champaign  
***Donald Lacombe,*** West Virginia University  
***Xueting Zhao,*** West Virginia University

### **3E CGE MODELING**

**Room:** Monroe

**Chair:** Bruce Weber, Oregon State University

#### ***Merging Economic and Civil Engineering***

##### ***Models to Estimate the Impact of Earthquakes***

**Harvey Cutler**, Colorado State University

**Naiyu Wang**, University of Oklahoma

**Charles Nicholson**, University of Oklahoma

**Sammy Zahran**, Colorado State University

##### ***A General Equilibrium Analysis of the Welfare Impacts of the 2015 Tax Adjustment in Illinois***

**Yizhou Zhang**, University of Illinois

##### ***The Impact of Future Population Growth on School District Finances***

**Robert Carey**, Clemson University

##### ***A Sub-County, Multi-Regional Computable General Equilibrium Model for the Assessment of Regional Vulnerability to Natural Disasters and Resilience Plans***

**Yunguang Chen**, Resources for the Future

**Yong Chen**, Oregon State University

**Bruce Weber**, Oregon State University

**Jeff Reimer**, Oregon State University

#### **Discussants:**

**Christa Court**, MRIGlobal

**Harvey Cutler**, Colorado State University

**Peter Jarosi**, West Virginia University

**Vinicius Vale**, Federal University of Juiz de Fora

### **3F LOCAL REACTION TO NATURAL OR MAN-MADE DISASTERS**

**Room:** Georgetown - Salon C

**Chair:** J. Matthew Fannin, Louisiana State University

#### ***Surviving a Hurricane: Urban Decline and the Dynamics of Local Supply Shocks***

**Kyle Hood**, Bureau of Economic Analysis

**William Larson**, Federal Housing Finance Agency

#### ***Assessing Why People Choose NOT to Prepare for Economic Downturns or Natural or Man-made Disasters***

**Julie Fagan**, Rutgers University

**Farrah Khan**, Rutgers University

#### ***Natural Disasters and Rural to Urban Migration in Latin America***

**Madeline Messick**, University of Southern Mississippi

#### ***Optimal Management of Post Disaster Debris Removal***

**Alejandra Breve Ferrari**, Louisiana State University

**J. Matthew Fannin**, Louisiana State University

#### **Discussants:**

**Trina Biswas**, Louisiana State University

**Malcolm Glover**, University of Central Arkansas

**Diana Gutierrez Posada**, University of Oviedo

**J. Sebastian Leguizamon**, Western Kentucky University

**10:00 am – 10:30 am**

**REFRESHMENT BREAK**

**Francis Scott Key**

**10:30 am – 12:00 pm**

**4A FEDERAL ORGANIZATIONS 2:  
SUPPORTING REGIONAL AND  
LOCAL DEVELOPMENT THROUGH  
PROGRAMS AND RESEARCH**

**Room:** Georgetown - Salon A

**Chair:** John Deskins, West Virginia  
University

**Panel:**

***Julie Marshall***, Appalachian Regional  
Commission

***Richard Schwinn***, US Small Business  
Administration

***Miriam Segal***, US Small Business  
Administration

**4B PUBLISHING IN REGIONAL SCIENCE  
JOURNALS**

**Room:** Monroe

**Chair:** Richard Cebula, Jacksonville  
University

**Panel:**

***Richard Cebula***, Jacksonville University  
Journal of Regional Analysis & Policy

***Mark Partridge***, The Ohio State  
University, Journal of Regional Science

***Dan Rickman***, Oklahoma State  
University, Growth and Change

***Amanda Ross***, West Virginia University,  
Review of Regional Studies

***Heather Stephens***, West Virginia  
University, Regional Studies, Regional  
Science

#### **4C HOW HOUSING MARKETS INTERACT WITH LOCAL AND INDIVIDUAL ECONOMIC CHANGE**

**Room:** Georgetown - Salon C

**Chair:** Cynthia Rogers, University of Oklahoma

##### ***Why does the Return to Experience Vary by Worker Type Across Cities? The Role of Life-Cycle Housing Demand***

**Chun Kuang**, The George Washington University

##### ***Demand for New Cities: Property Value capitalization of municipal incorporation***

**Carlianne Patrick**, Georgia State University  
**Christopher Mothorpe**, College of Charleston

##### ***The Association between Student Loan Debt and Housing Tenure Choice among Young Adults***

**Silda Nikaj**, Texas Christian University  
**Joshua Miller**, US Department of Housing and Urban Development

##### **Discussants:**

**Michael Betz**, The Ohio State University  
**Bruce Weber**, Oregon State University  
**John Winters**, Oklahoma State University

#### **4D MIGRATION 1**

**Room:** Georgetown - Salon B

**Chair:** David Clark, Marquette University

##### ***Migrant-Attractive Power of Shale Gas Developments in the USA***

**Isha Rajbhandari**, The Ohio State University

**Alessandra Faggian**, The Ohio State University

**Mark Partridge**, The Ohio State University

##### ***The Role of Job Polarization on the Diffusion of Mexican Immigrants in the United States since the 1980s***

**Younjun Kim**, University of Nebraska

**Eric Thompson**, University of Nebraska

##### ***Crime and Migration: The Case of the EU Enlargement***

**Juan Tomas Sayago Gomez**, West Virginia University

##### **Discussants:**

**Robert Dunn**, Washington & Jefferson College

**Ariadna Martinez Gonzalez**, The Ohio State University

**Nancy White**, Bucknell University

## **4E SMALL BUSINESS ENTREPRENEURS 1**

**Room:** Jefferson

**Chair:** Jeffrey O'Hara, USDA - Agricultural  
Marketing Service

### ***Enhancing Marketing Intelligence for Business Management in Spatial Domain Using Spatial Statistics***

**Ather Ashraf**, Punjab University

**Rauf Ahmed**, Infinone

### ***Does Regional Variation in Startup Concentration Predict Employment Growth in Pennsylvania?***

**Brian Sloboda**, University of Maryland  
University College

**Yaya Sissoko**, Indiana University of  
Pennsylvania

### ***Entrepreneurial Universities and Collective Action in Regional Development***

**Troy Mix**, University of Delaware

#### **Discussants:**

**Olugbenga Ajilore**, University of Toledo

**Renata Caldas**, Universidade Federal de  
Pernambuco

**Rodrigo Perez Silva**, The Ohio State  
University

## **4F RESEARCH ON RURAL ECONOMIC ISSUES**

**Room:** Washington

**Chair:** Frank O'Connor, Eastern  
Kentucky University

### ***Linkages between Rural Community Wealth and Health Care Provision: Findings of a Survey of 150 Small Rural US Towns***

**John Pender**, Economic Research Service,  
USDA

**Vivian Hughes**, Kansas State University

### ***Spatial Variation in Housing Cost-Burden among Rural Low- and Moderate-Income Renters***

**Peter Han**, Economic Research Service,  
USDA

**John Cromartie**, Economic Research  
Service, USDA

### ***Why Only Some Rural Recreation Areas Are Prospering***

**David McGranahan**, Economic Research  
Service, USDA

#### **Discussants:**

**Tessa Conroy**, University of Wisconsin-  
Madison

**Alison Davis**, University of Kentucky

**Amanda Weinstein**, University of Akron

---

**12:15 pm – 1:45 pm**

---

**AWARDS LUNCHEON**  
**Capitol View Ballroom**  
**(14<sup>th</sup> Floor)**

**2:00 pm – 4:00 pm**

---

**5A FEDERAL ORGANIZATIONS 3:  
RESEARCH, DATA, AND  
OPPORTUNITIES WITH  
FEDERAL STATISTICAL  
AGENCIES**

**Room:** Monroe

**Chair:** John Kort, Retired (Bureau of  
Economic Analysis/Economic Research  
Service)

**Panel:**

**Shawn Klimek**, Bureau of the Census

**Ian Mead**, Bureau of Economic Analysis

**John Pender**, Economic Research Service

**5B MARGINALIZATION,  
ADAPTATION, AND  
ASSISTANCE: THE JOURNEY OF  
THOSE WHO ARE LEFT BEHIND**

**Room:** Washington

**Chair:** Sarah Low, Economic Research  
Service, USDA

***The Complex Livelihood Strategies of Low-  
Income Oregonians: Bundling SNAP Use,  
Unemployment Insurance and Wages***

**Bruce Weber**, Oregon State University

**Deana Grobe**, Oregon State University

***Collaborative Action: Globalization's Impact  
on Humanitarian Aid Practices***

**Malcolm Glover**, University of Central  
Arkansas

***Poor Mexican Areas or Poor Mexican People?  
A Cross-Municipality Analysis of the Causes of  
Mexican Poverty and Some Policy Implications***

**Ariadna Martinez Gonzalez**, The Ohio State  
University

***Are the Most Productive Regions Necessarily  
the Most Successful? Local Effects of  
Productivity on Socioeconomic Performance in  
US counties***

**Mark Partridge, Alexandra Tsvetkova**, and  
**Michael Betz**, The Ohio State University

**Discussants:**

**Steven Deller**, University of Wisconsin

**Troy Mix**, University of Delaware

**Frank O'Connor**, University of Kentucky

**Cynthia Rogers**, University of Oklahoma

## **5C RESEARCHING THE EFFECT OF STATE AND LOCAL TAXATION ON ECONOMIC GROWTH**

**Room:** Georgetown - Salon A

**Chair:** Georg Grassmueck, Lycoming College

### ***State Tax Progressivity, Economic Growth and Income Inequality***

***Martin Shields***, Colorado State University

***Harvey Cutler***, Colorado State University

### ***Urban Agglomerations, Taxation and the Laffer Curve: The Spanish Case***

***Laura Varela-Candamio***, University of A Coruña

***Fernando Rubiera***, University of Oviedo

### ***The Impact of Tax Policies on US State Economies***

***Bo Feng***, The Ohio State University

### ***Tax Incentives for Industrial Recruitment: A Critical Review***

***Peter Calcagno***, College of Charleston

***Frank Hefner***, College of Charleston

### **Discussants:**

***Richard Cebula***, Jacksonville University

***John Deskins***, West Virginia University

***Sriparna Ghosh***, West Virginia University

***Dan Rickman***, Oklahoma State University

## **5D WATER SYSTEMS, GROWTH, AND ECOLOGICAL ISSUES**

**Room:** Georgetown - Salon B

**Chair:** Brian Lego, West Virginia University

### ***Spatial Analysis of Water Convergence on a Province Level in China***

***Xueting Zhao***, West Virginia University

### ***Water Utility Pricing and Minimum Charges: What Explains the Differences in West Virginia?***

***Elham Erfanian***, West Virginia University

***Alan Collins***, West Virginia University

### ***Accessibility, Vulnerability, and Resilience in a Stochastic Model of Sustainable Ecotourism***

***Amit Batabyal***, Rochester Institute of Technology

### ***Analysis of Industry Linkage Effect Evaluation of Yili River Valley Region on the Basis of Industrial Ecology Perspective***

***Li Li***, Xinjiang Agricultural University

### **Discussants:**

***Mark Burkey***, North Carolina A&T

***Hyun Ji Lee***, Oklahoma State University

***Santiago Pinto***, Federal Reserve Bank of Richmond

***Weihua Zhao***, George Washington University



## **5E INPUT-OUTPUT 1**

**Room:** Jefferson

**Chair:** Dawn Thilmany, Colorado State University

***Agriculture Productivity, International Trade and Food Security: Some Implications from a Greater Productivity in Brazilian***

***Vinicius Vale*** and ***Fernando Perobelli***,  
Federal University of Juiz de Fora

***A Method for Evaluating the Economic Contribution of a Local Food System***

***Philip Watson***, University of Idaho  
***Greg Alward, Steve Cooke***, and  
***David Kay***, Alward Institute for  
Collaborative Science  
***Alfonso Morales***, University of Wisconsin

***The Role of Crop Insurance Programs in Climate Change Impact Measurement***

***Sandy Dall'Erba*** and ***Zhangliang Chen***,  
University of Illinois at Urbana-Champaign

***The Impact of Agri-Business Service Providers on the Local Economy***

***Mary Carey***, University College  
Dublin/Teagasc

### **Discussants:**

***Margarita Barrera***, University of Seville and  
University of Illinois at Urbana-Champaign  
***Andre Carrascal***, University of Illinois and  
University of Santiago de Compostela  
***Stephen Cooke***, Alward Institute for  
Collaborative Science  
***Philip Watson***, University of Idaho

## **5F THE GIFTS AND CHALLENGES THAT NATURE OFFERS FOR LOCAL ECONOMIES**

**Room:** Georgetown - Salon C

**Chair:** J. Sebastian Leguizamon,  
Western Kentucky University

***The Impact of Shale Development on Housing Prices in Colorado***

***Heather Stephens***, West Virginia University  
***Amanda Weinstein***, University of Akron

***Drivers of Coal-Fired Capacity Retirements in Electricity Markets***

***Eric Bowen*** and ***Stratford Douglas***, West  
Virginia University

***Public Investment or the Economy?***

***Understanding the Resilience of the Local Government Finances Following the 2005 Hurricane Season***

***Trina Biswas, Vikash Dangal***, and  
***J. Matthew Fannin***, Louisiana State University  
***Isaac Sitienei***, Texas State University

***Regional Windfalls or Beverly Hillbillies? Local and Absentee Ownership of Oil and Gas Royalties***

***Jason Brown***, Federal Reserve Bank of Kansas  
City  
***Timothy Fitzgerald***, Texas Tech University  
***James Sears***, Montana State University  
***Jeremy Weber***, University of Pittsburgh

### **Discussants:**

***Michael Farmer***, Texas Tech University  
***Da Fei***, Rutgers University  
***Kyle Hood***, US Bureau of Economic Analysis  
***Isha Rajbhandari***, The Ohio State University

**4:00 pm – 4:30 pm**

---

**REFRESHMENT BREAK**

**Francis Scott Key**

**4:30 pm – 6:00 pm**

---

**6A FEDERAL ORGANIZATIONS 4:  
REGIONAL RESEARCH AT THE  
FEDERAL RESERVE BANK**

**Room:** Jefferson

**Chair:** Santiago Pinto, Federal Reserve  
Bank of Richmond

**Panel:**

**Jason Brown**, Federal Reserve Bank of  
Kansas City

**Santiago Pinto**, Federal Reserve Bank of  
Richmond

**Michael Trebing**, Federal Reserve Bank of  
Philadelphia

**6B STUDIES ON LOCAL AND  
REGIONAL ECONOMIC GROWTH**

**Room:** Georgetown - Salon A

**Chair:** Tony Grubestic, Arizona State  
University

***A State-Level Analysis of Natural Resources  
and Investment***

**Robert Dunn**, Washington & Jefferson  
College

**Leslie Dunn**, Washington & Jefferson  
College

***Golden Triangle: Maximizing Economic  
Development***

**Melody Muldrow**, University of Arkansas at  
Little Rock

**Gregory Hamilton**, University of Arkansas at  
Little Rock

***The Effects of Probabilistic Innovations on  
Schumpeterian Economic Growth in a Creative  
Region***

**Amit Batabyal**, Rochester Institute of  
Technology

**Hamid Beladi**, University of Texas at San  
Antonio

**Discussants:**

**Mouhcine Guettabi**, University of Alaska

**John Pender**, Economic Research Service,  
USDA

**Peter Schaeffer**, West Virginia University

## **6C SMALL BUSINESS AND ENTREPRENEURS 2**

**Room:** Washington

**Chair:** Richard Cebula, Jacksonville University

### ***The Spatial Relationship between State Tax Policy and Entrepreneurship.***

**John Deskins**, West Virginia University

**Don Lacombe**, West Virginia University

**Amanda Ross**, West Virginia University

### ***Tax Rates and Entrepreneurial Activity***

**Sriparna Ghosh**, West Virginia University

### ***Rural Entrepreneurial Intentions and the Gender Divide***

**Alison Davis**, University of Kentucky

**Georgette Owusu-Amankwah**, University of Kentucky

**Shaheer Burney**, University of Kentucky

**James Allen**, University of Kentucky

### **Discussants:**

**Frank Hefner**, College of Charleston

**Brian Sloboda**, University of Maryland University College

**Brian Whitacre**, Oklahoma State University

## **6D PERSPECTIVES ON THE STRUCTURE AND DEVELOPMENT OF REGIONS**

**Room:** Georgetown - Salon B

**Chair:** Douglas Woodward, University of South Carolina

### ***Functional Regions in Gravity Models and Accessibility Measures***

**Michael Olsson**, University of Skövde

### ***Developing a Clustering Approach for Regional Identification Using Multiple Functions***

**Trina Biswas**, Louisiana State University

**J. Matthew Fannin**, Louisiana State University

**Deborah Williams**, Louisiana State University

**Vikash Dangal**, Louisiana State University

### ***Ethnicity, Institutions, and Urban Bias: A Quantitative Analysis***

**Sidney Turner**, Fors Marsh Group LLC

**Uma Kelekar**, Marymount University

### **Discussants:**

**J. Matthew Fannin**, Louisiana State University

**Zhi Li**, University of Maryland

**Qing Su**, Northern Kentucky University

## **6E INPUT-OUTPUT 2**

**Room:** Monroe

**Chair:** Andre Carrascal, University of Illinois at Urbana-Champaign and University of Santiago de Compostela

### ***An Input-Output Analysis of Arizona's Virtual Water Trade***

**Jinwon Bae**, University of Arizona

**Sandy Dall'Erba**, University of Illinois at Urbana-Champaign

### ***Regional and Sectoral Considerations in the Spanish Economy: The Case of Ophthalmic Optics***

**Margarita Barrera**, University of Seville and University of Illinois at Urbana-Champaign

**Geoffrey Hewings**, University of Illinois at Urbana-Champaign

**Julián Pérez**, Autonomous University of Madrid

**Alfredo Mainar**, European Commission and Institute of Prospective Technological Studies

### ***Modeling Spatial Food Supply Network based on Geography, Distance, and Competition***

**Yicheol Han, Stephan Goetz, and**

**Houtian Ge**, Pennsylvania State University

#### **Discussants:**

**Julie Fagan**, Rutgers University

**Miguel Flores**, Escuela de Gobierno y Transformacion Publica

**Geoffrey Hewings**, University of Illinois at Urbana-Champaign

## **6F MIGRATION 2**

**Room:** Georgetown - Salon C

**Chair:** Thomas Knapp, Pennsylvania State University

### ***Understanding the Decline in Inter-Urban and Intra-Urban Mobility***

**Cathy Liu**, Georgia State University

**Gary Painter**, University of Southern California

### ***Up and Down the Spanish Urban Hierarchy: Migration Patterns and Wages in a Crisis Context***

**Diana Gutierrez Posada**, University of Oviedo

### ***How the "Great Recession" Affected Migration of the Elderly***

**Christiadi**, West Virginia University

**Brian Cushing**, West Virginia University

#### **Discussants:**

**M. Rose Olfert**, University of

**Cathy Liu**, Georgia State University  
Saskatchewan

**David Clark**, Marquette University

---

**6:30 pm – 8:30 pm**

### **SRSA RECEPTION**

**Room: Capitol View Ballroom  
(14<sup>th</sup> Floor)**

## Saturday, April 2

**7:00 am – 8:00 am**

**CONTINENTAL BREAKFAST**  
**Francis Scott Key Room**

**8:00 am – 10:00 am**

**7A APPLICATIONS OF SPATIAL  
ECONOMETRIC ANALYSIS**

**Room:** Georgetown - Salon A

**Chair:** Heather Stephens, West Virginia  
University

***Deer-Related Auto Accidents: The Hunting  
Technique Effect***

***Caleb Stair***, West Virginia University

***The Value of Environmental Quality: Estimates  
from Space-time Analysis***

***John Carruthers***, The George Washington  
University

***David Clark***, Marquette University

***A Spatial Study of the Behavior of County-level  
Alcohol Sales in Tennessee***

***Mark Melichar***, Tennessee Tech University

***Willis Lewis***, Winthrop University

***Ferdinand Difurio***, Tennessee Tech University

***The Role of Peer Civic Engagement during High  
School on Adult Political Participation***

***Olugbenga Ajilore***, University of Toledo

***Gayle Alberda***, Fairfield University

**Discussants:**

***Susane Leguizamon***, Western Kentucky  
University

***James Lesage***, Texas State University

***Cristina Miller***, Economic Research Service,  
USDA

***Juan Tomas Sayago Gomez***, West Virginia  
University

## **7B SMALL BUSINESS AND ENTREPRENEURS 3**

**Room:** Monroe

**Chair:** Brian Sloboda, University of  
Maryland - University College

***Eligibility Assessment of the Brazilian Semi-  
Arid Criteria: Impacts on Municipalities'  
Employment and Income***

***Renata Caldas***, Universidade Federal de  
Pernambuco

***Small Business Borrowing and Peer-to-Peer  
Lending: Evidence from Lending Club***

***Amanda Ross, Adam Nowak, and  
Christopher Yencha***, West Virginia  
University

***Community Characteristics and Business  
Survival Rates***

***Steven Deller and Tessa Conroy***, University  
of Wisconsin-Madison

***Does the Tide Raise all Boats: Entrepreneurial  
Response to Economic Conditions across the  
Urban-Rural Hierarchy***

***Alexandra Tsvetkova, Mark Partridge, and  
Michael Betz***, The Ohio State University

**Discussants:**

***Shaoming Cheng***, Florida International  
University

***John Halstead***, University of New  
Hampshire

***Judith Stallmann***, University of Missouri

***Laura Varela-Candamio***, University of A  
Coruña

## **7C REGIONAL RESEARCH FRONTIERS 2**

**Room:** Washington

**Chair:** Randall Jackson, RRI, West  
Virginia University

### ***The Emerging Role of the Energy-Water Nexus in Regional Development***

**Christa Court**, MRIGlobal

### ***Directions in Migration Research***

**Peter Schaeffer**, West Virginia University

### ***Mixture Models with Spatial Dependency***

**Gary Cornwall**, University of Cincinnati

**Olivier Parent**, University of Cincinnati

### ***Structural Decomposition and Shift-Share***

#### ***Analyses: Let the Parallels Converge***

**Erik Dietzenbacher**, University of Groningen

**Michael Lahr**, Rutgers University

#### **Discussants:**

**Eric Bowen**, West Virginia University

**Thomas Knapp**, Pennsylvania State  
University

**Donald Lacombe**, West Virginia University

**Peter Stenberg**, Economic Research Service,  
USDA

## **7D SPATIAL CLUSTERING**

**Room:** Georgetown - Salon B

**Chair:** Frank Hefner, College of  
Charleston

### ***Problems with the Use of Distance Variables in Policy Analysis and How to Fix Them: An Empirical Example***

**Michael Farmer**, Texas Tech University

**Michael Shiroya**, Texas Tech University

### ***Micropolitan: A Relevant Policy Geography for the 21st Century?***

**J. Matthew Fannin**, Louisiana State  
University

**Sam Cordes**, Purdue University

**Bruce Weber**, Oregon State University

### ***Technological Intensity and Spatial Clustering of Firms in Mexico***

**Miguel Flores**, Escuela de Gobierno y  
Transformacion Publica

**Amado Villarreal**, Escuela de Gobierno y  
Transformacion Publica

**Francisco Gasca**, Escuela de Gobierno y  
Transformacion Publica

### ***Separating Rational Herding Among Firms and Spatial Clustering of Demand: A Case in Branch Banking***

**Wade Litt**, The Ohio State University

#### **Discussants:**

**Bo Feng**, The Ohio State University

**Michael Olsson**, University of Skövde

**Xiangwei Sun**, Nanchang University

**Yizhou Zhang**, University of Illinois at  
Urbana-Champaign



## 7E INPUT-OUTPUT 3

**Room:** Jefferson

**Chair:** William Schaffer, Georgia Institute of Technology

### ***Youth Unemployment in Europe: The North-South Divide Interpreted Using a Bi-Regional Demoeconomic Model***

**Andre Carrascal**, University of Illinois at Urbana-Champaign and University of Santiago de Compostela

**Geoffrey Hewings**, University of Illinois at Urbana-Champaign

### ***Optimal Locations of Fresh Produce Supplier Hubs in the United States***

**Houtian Ge**, Pennsylvania State University

**Patrick Canning**, Economic Research Service, USDA

**Stephan Goetz**, Pennsylvania State University

**Agnes Perez**, Economic Research Service, USDA

### ***The Challenge of Estimating the Impact of Disasters: Many Approaches, Many Limitations and a Compromise***

**Andre Fernandes Tomon Avelino**, University of Illinois at Urbana-Champaign

### ***Alward Institute Community Intelligence Research Laboratory***

**Gregory Alward**, **David Kay**, and **Steve Cooke**, Alward Institute for Collaborative Science

**Philip Watson**, University of Idaho

#### **Discussants:**

**Gregory Alward**, Alward Institute for Collaborative Science

**Jason Brown**, Federal Reserve Bank of Kansas City

**Robert Carey**, Clemson University

**Zafer Baris Gul**, Rutgers University and Akdeniz University

## 7F TRANSPORTATION

**Room:** Georgetown - Salon C

**Chair:** Frank Goetzke, University of Louisville

### ***Whether and How Spatial Characteristics and Motor Vehicle Travel in the US Urban Areas?***

**Qing Su**, Northern Kentucky University

**Liren Zhou**, Aecom

**Johanan Mushota**, Northern Kentucky University

### ***Effect of Commodity's Value-Weight Ratio on Freight Mode Choice***

**Da Fei**, Rutgers University

### ***Vehicle Fuel Economy and Vehicle Miles Traveled: An Empirical Investigation of Jevon's Paradox***

**Vinola Munyon**, Cleveland State University

**William Bowen**, Cleveland State University

**John Holcomb**, Cleveland State University

### ***The Pain Persists: Exploring the Spatiotemporal Trends in Air Fares and Itinerary Pricing in the United States, 2002-2013***

**Tony Grubestic**, Arizona State University

**Fangwu Wei**, Drexel University

#### **Discussants:**

**Frank Goetzke**, University of Louisville

**Tony Grubestic**, Arizona State University

**Rajendra Kulkarni**, George Mason University

**Sumei Zhang**, University of Louisville



**10:00 am – 10:30 am**  
**REFRESHMENT BREAK**

---

**10:30 am – 12:00 pm**

---

**8A LABOR MARKET ANALYSIS**

**Room:** Jefferson

**Chair:** Eric Bowen, West Virginia  
University

***Decomposing the Wage Differential Between  
Veterans and Non-Veterans***

***Amanda Weinstein***, University of Akron

***Francesco Renna***, University of Akron

***Racial Differences in the Influence of Mass  
Layoffs and Domestic Violence***

***Susane Leguizamon***, Western Kentucky  
University

***The Kids are Alright: Working Women,  
Schedule Flexibility, and Child Care***

***Tessa Conroy***, University of Wisconsin-  
Madison

**Discussants:**

***Christiadi***, West Virginia University

***Silda Nikaj***, Texas Christian University

***Sidney Turner***, Fors Marsh Group LLC

**8B LEARNING FROM HIGHER  
LEARNING**

**Room:** Georgetown - Salon A

**Chair:** Robert Dunn, Washington &  
Jefferson College

***Knowledge Spillovers and Wage Inequality.  
The Side Effect of the Concentration of Highly  
Educated Workers in US Cities***

***Rodrigo Perez Silva***, The Ohio State  
University

***The Effects of State Merit Aid Programs on  
Attendance at Elite Colleges***

***David Sjoquist***, Georgia State University

***John Winters***, Oklahoma State University

***Encouraging Sustainable Transportation—  
Insights from the Earn-A-Bike Program at the  
University of Louisville***

***Sumei Zhang***, University of Louisville

***Emmanuel Boamah***, University of Louisville

***Justin Mog***, University of Louisville

**Discussants:**

***Alejandra Breve Ferrari***, Louisiana State  
University

***Amanda Ross***, West Virginia University

***Caleb Stair***, West Virginia University

## **8C SMALL BUSINESS AND ENTREPRENEURS 4**

**Room:** Monroe

**Chair:** Peter Stenberg, ERS

### ***Community Banks and Agricultural Sales in Rural States***

**Jeffrey O'Hara**, Agricultural Marketing Service, USDA

### ***The Impact of Rural Business Development Programs: An Evaluation of USDA's Value-Added Producer Grants (VAPG) Program***

**Anil Rupasingha**, Economic Research Service, USDA

**John Pender**, Economic Research Service, USDA

**Seth Wiggins**, West Virginia University

### ***Rural Business Financial Capital Use & Availability: The Nexus with Innovation***

**Sarah Low**, Economic Research Service, USDA

**Anil Rupasingha**, Economic Research Service, USDA

**J. Nich Tremper**, University of Minnesota

#### **Discussants:**

**Mary Carey**, University College Dublin/Teagasc

**David Shideler**, Oklahoma State University

**Heather Stephens**, West Virginia University

## **8D UNDERSTANDING URBAN/ SPATIAL STRUCTURE**

**Room:** Washington

**Chair:** Frank Goetzke, University of Louisville

### ***Consumption and City Size: Evidence from China***

**Zhi Li**, University of Maryland

**Chengri Ding**, University of Maryland

### ***Telework: Urban Form, Energy Consumption, and Greenhouse Gas Implications***

**Weihua Zhao**, George Washington University

**William Larson**, Federal Housing Finance Agency

### ***Determinants of Urban Sprawl: A Panel Data Approach***

**Joseph Desalvo**, University of South Florida

**Qing Su**, Northern Kentucky University

#### **Discussants:**

**Yunguang Chen**, Resources for the Future

**Li Li**, Xinjiang Agricultural University

**Madeline Messick**, University of Southern Mississippi

## **8E MEASURES OF INCOME AND OUTPUT FOR STATES AND METRO AREAS**

**Room:** Georgetown - Salon B

**Chair:** Mark Burkey, North Carolina A&T

### ***MSA PCPI Divergence***

***John Connaughton***, University of North Carolina - Charlotte

***Caroline Swartz***, University of North Carolina - Charlotte

### ***State Real GDP and the Coincident Index: A Preliminary Comparison***

***Francis Ahking***, University of Connecticut

### ***The Distribution of Household Income in Kentucky: 1980-2010***

***Frank O'Connor***, Eastern Kentucky University

#### **Discussants:**

***Randall Jackson***, West Virginia University

***Willis Lewis***, Winthrop University

***Alexandra Tsvetkova***, The Ohio State University

## **8F NEW APPROACHES TO UNDERSTAND IMPACTS OF SOCIAL ISSUES**

**Room:** Georgetown - Salon C

**Chair:** Bo Feng, The Ohio State University

### ***What Is the Impact of Proximity and Timing of Crime in Housing Prices? The Cases of Denver and Seattle***

***Juan Tomas Sayago Gomez***, West Virginia University

***Adam Nowak***, West Virginia University

### ***Coal and Family through the Boom and Bust: A Look at the Coal Industry's Impact on Marriage and Fertility***

***Michael Betz***, The Ohio State University

***Anastasia Snyder***, The Ohio State University

### ***Exploring the Causal Relationship between Major League Baseball Games and Crime: A Synthetic Control Analysis***

***Hyunwoong Pyun***, West Virginia University

#### **Discussants:**

***David Clark***, Marquette University

***Elham Erfanian***, MRIGlobal

***Anthony Yezer***, George Washington University

---

**12:15 pm – 1:45 pm**

**PRESIDENTIAL ADDRESS  
BUSINESS LUNCHEON**

**Capitol View Ballroom  
(14<sup>th</sup> Floor)**

**2:00 pm – 4:00 pm**

---

**9A REGIONAL RESEARCH  
FRONTIERS 3**

**Room:** Jefferson

**Chair:** Randall Jackson, RRI, West  
Virginia University

***Object Orientation, Open Regional Science,  
and Cumulative Knowledge Building***

***Randall Jackson***, West Virginia University

***Peter Jarosi***, West Virginia University

***Sergio Rey***, Arizona State University

***Hierarchical Spatial Econometric Models in  
Regional Science***

***Donald Lacombe***, West Virginia University

***Stuart McIntyre***, University of Strathclyde

***Opportunities and Challenges of Spatially  
Distributed Innovation Imaginarius***

***Timothy Wojan***, Economic Research  
Service, USDA

***Exploring Innovation Gaps in the American  
Space Economy***

***Gordon Mulligan***, University of Arizona

***Neil Reid***, University of Toledo

***John Carruthers***, The George Washington  
University

***Matthew Lehnert***, University of Toledo

**Discussants:**

***William Bowen***, Cleveland State University

***Gary Cornwall***, University of Cincinnati

***Anil Rupasingha***, University of Cincinnati

***Timothy Wojan***, Economic Research  
Service, USDA

**9B HOSPITALS, HEALTH, AND  
LOCAL ECONOMIC  
DEVELOPMENT**

**Room:** Georgetown - Salon B

**Chair:** John Connaughton, University of  
North Carolina - Charlotte

***Economic Impacts of Hospitals on Rural  
Communities***

***Cristina Miller***, Economic Research Service,  
USDA

***John Pender***, Economic Research Service,  
USDA

***Insurance Coverage: Small Area Estimates and  
Hospital Accessibility***

***Mark Burkey***, North Carolina A&T

***Mariama Sidibe***, North Carolina A&T

***What are the Health and Wealth Implications  
of Economic Development?***

***Mouhcine Guettabi***, University of Alaska-  
Anchorage

**Discussants:**

***Ferdinand Difurio***, Tennessee Tech  
University

***David McGranahan***, Economic Research  
Service, USDA

***Melody Muldrow***, University of Arkansas at  
Little Rock

## **9C NEW PERSPECTIVES ON THE DETERMINANTS OF LOCAL GOVERNMENT REVENUES AND EXPENDITURES**

**Room:** Georgetown - Salon C

**Chair:** Nancy White

### ***The Housing Crisis, Foreclosures, and Local Tax Revenues***

**J. Sebastian Leguizamón**, Western Kentucky University

**James Alm**, Tulane University

### ***Community Associations and Local Government Budget***

**Hai Guo**, Florida International University

**Shaoming Cheng**, Florida International University

### ***Local Government Consolidation in Pennsylvania and Local Government Expenditures***

**Georg Grassmuck**, Lycoming College

### ***Implications of a State Sales Tax Rate Increase with Multi-Tiered Sales Taxation***

**Cynthia Rogers**, University of Oklahoma

**Greg Burge**, University of Oklahoma

#### **Discussants:**

**Chun Kuang**, The George Washington University

**Wade Litt**, The Ohio State University

**Hyunwoong Pyun**, West Virginia University

**Juan Tomas Sayago Gomez**, West Virginia University

## **9D INPUT-OUTPUT 4**

**Room:** Monroe

**Chair:** Geoffrey Hewings, University of Illinois at Urbana Champaign

### ***Multiregional Input-Output Modelling for Regional Energy Requirements in Turkey***

**Zafer Baris Gul**, Rutgers University and Akdeniz University

### ***Household Induced Effects and Environmental Externalities: International Patterns of Water Pollution through a Structural Decomposition Analysis***

**Andre Carrascal**, University of Illinois at Urbana-Champaign and University of Santiago de Compostela

**Andre Fernandes Tomon Avelino**, University of Illinois at Urbana-Champaign

**Alberto Franco Solís**, University of Illinois at Urbana-Champaign and University of Extremadura

### ***Integrating HAZUS and Input-Output for recovery path analysis: an application to the 2007 Chehalis River Flood (WA)***

**Andre Fernandes Tomon Avelino** and **Sandy Dall'Erba**

University of Illinois at Urbana-Champaign

### ***Identifying Opportunities for Growth in Michigan's Forest-Product Sectors***

**Stephen Cooke**, **David Kay**, and **Gregory Alward**

Alward Institute for Collaborative Science

**Philip Watson**, University of Idaho

#### **Discussants:**

**Andre Fernandes Tomon Avelino**, University of Illinois at Urbana-Champaign

**David Kay** Alward Institute for Collaborative Science

**Michael Lahr**, Rutgers University

**Dawn Thilmany**, Colorado State University

## Participants Index

Francis Ahking	francis.ahking@uconn.edu	8E
Olugbenga Ajilore	gbenga.ajilore@utoledo.edu	4E, 7A
Gayle Alberda	galberda@gmail.com	7A
Gregory Alward	greg.alward@alwardinstitute.org	5E, 7E, 9D
Ather Ashraf	atherashraf@gmail.com	4E
Margarita Barrera	mbarrera3@us.es	5E, 6E
Amit Batabyal	aabgsh@rit.edu	3A, 5D, 6B
Michael Betz	betz.40@osu.edu	4C, 5B, 7B, 8F
Trina Biswas	tbiswas@agcenter.lsu.edu	3F, 5F, 6D
Eric Bowen	eric.bowen@mail.wvu.edu	5F, 7C, 8A
William Bowen	w.bowen@csuohio.edu	2A, 7F, 9A
Alejandra Breve Ferrari	abferrari@agcenter.lsu.edu	3F, 8B
Jason Brown	jason.brown@kc.frb.org	5F, 6A, 7E
Mark Burkey	markburkey@gmail.com	5D, 8E, 9B
Renata Caldas	renatamcaldas@gmail.com	4E, 7B
Mary Carey	mary.carey@ucdconnect.ie	5E, 8C
Robert Carey	carey2@clemson.edu	3E, 7E
Andre Carrascal	andreccr@illinois.edu	5E, 6E, 7E, 9D
John Carruthers	jic@gwu.edu	3D, 7A, 9A
Richard Cebula	rcebula@ju.edu	4B, 5C, 6C
Yong Chen	yong.chen@oregonstate.edu	3E
Yunguang Chen	yg.ygchen@gmail.com	3E, 8D
Shaoming Cheng	scheng@fiu.edu	7B, 9C
Christiadi	Christiadi@mail.wvu.edu	6F, 8A
David Clark	david.clark@marquette.edu	4D, 6F, 7A, 8F
John Connaughton	jec@uncc.edu	2A, 3A, 8E, 9B
Tessa Conroy	tessa.conroy@wisc.edu	4F, 7B, 8A
Stephen Cooke	stephen.cooke@alwardinstitute.org	5E, 7E, 9D
Gary Cornwall	cornwagj@mail.uc.edu	7C, 9A
Christa Court	christa.jensen@gmail.com	3E, 7C
Brian Cushing	Brian.Cushing@mail.wvu.edu	6F
Harvey Cutler	harvey.cutler@colostate.edu	3E, 5C
Sandy Dall'Erba	dallerba@illinois.edu	3D, 5E, 6E, 9D
Vikash Dangal	vdangal@agcenter.lsu.edu	5F, 6D
Alison Davis	Alison.Davis@uky.edu	4F, 6C
Steve Deller	scdeller@wisc.edu	3C, 5B, 7B
John Deskins	john.deskins@mail.wvu.edu	4A, 5C, 6C

Ferdinand Difurio	fdifurio@tntech.edu	7A, 9B
Robert Dunn	rdunn@washjeff.edu	4D, 6B, 8B
Elham Erfanian	elhamerfanian@mix.wvu.edu	5D, 8F
Cheryl Eavey	ceavey@nsf.gov	2B
Julie Fagan	fagan@scarletmail.rutgers.edu	3F, 6E
James Matthew Fannin	mfannin@agcenter.lsu.edu	3F, 5F, 6D, 7D
Michael Farmer	michael.farmer@ttu.edu	5F, 7D
Da Fei	feidanju@gmail.com	5F, 7F
Bo Feng	feng.411@buckeyemail.osu.edu	5C, 7D, 8F
Andre Fernandes	fernand17@illinois.edu	7E, 9D
Tomon Avelino	fernand17@illinois.edu	7E, 9D
Miguel Flores	miguelflores@itesm.mx	6E, 7D
Houtian Ge	hug19@psu.edu	6E, 7E
Sriparna Ghosh	sriparna.ghosh@mail.wvu.edu	5C, 6C
Malcolm Glover	malcolmglover1@gmail.com	3F, 5B
Stephan Goetz	sgoetz@psu.edu	3C, 6E, 7E
Frank Goetzke	f0goet01@louisville.edu	7F, 8D
Georg Grassmueck	grassmue@lycoming.edu	5C, 9C
Tony Grubestic	grubestic@asu.edu	3B, 6B, 7F
Mouhcine Guettabi	mguettabi@alaska.edu	6B, 9B
Zafer Baris Gul	zafergul1974@gmail.com	7E, 9D
Diana Gutierrez Posada	d.gutierrez.posada@gmail.com	3F, 6F
John Halstead	john.halstead@unh.edu	3C, 7B
Peter Han	peter.han@ers.usda.gov	3B, 4F
Yicheol Han	yuh14@psu.edu	6E
Frank Hefner	hefnerf@cofc.edu	5C, 6C, 7D
Geoffrey J D Hewings	hewings@illinois.edu	3D, 6E, 7E, 9D
Kyle Hood	kyle.hood@bea.gov	3F, 5F
Randall Jackson	rwjackson@mail.wvu.edu	3A, 7C, 8E, 9A
Peter Jarosi	peter.jarosi@mail.wvu.edu	3E, 9A
David Kay	david.kay@alwardinstitute.org	5E, 7E, 9D
Shawn Klimek	Shawn.D.Klimek@census.gov	5A
Younjun Kim	kyounjun2@unl.edu	3B, 4D
Thomas Knapp	kzu@psu.edu	6F, 7C
John Kort	jkort98@gmail.com	5A
Chun Kuang	kuangchunkc@gmail.com	4C, 9C
Rajendra Kulkarni	rkulkarn@gmu.edu	3A, 7F
Don Lacombe	Donald.Lacombe@mail.wvu.edu	3D, 6C, 7C, 9A
Michael Lahr	lahr@ejb.rutgers.edu	7C, 9D
Hyun Ji Lee	hyunjilee1029@gmail.com	3B, 5D



Brian Lego	blego@mail.wvu.edu	2A, 3B, 5D
J. Sebastian Leguizamon	j.sebastian.leguizamon@wku.edu	3F, 5F, 9C
Susane Leguizamon	susane.leguizamon@wku.edu	3B, 7A, 8A
James Lesage	james.lesage@txstate.edu	3D, 7A
Willis Lewis	lewisw@winthrop.edu	7A, 8E
Li Li	466347947@qq.com	5D, 8D
Zhi Li	lizhieric@gmail.com	6D, 8D
Wade Litt	litt.24@osu.edu	7D, 9C
Cathy Liu	cylu@gsu.edu	6F
Sarah Low	slow@ers.usda.gov	3C, 5B, 8C
Julie Marshall	jmarshall@arc.gov	4A
Ariadna Martinez Gonzalez	arimartinezg@gmail.com	4D, 5B
David McGranahan	dmcg@ERS.USDA.GOV	4F, 9B
Ian Mead	ian.mead@bea.gov	5A
Madeline Messick	maddy_g@yahoo.com	3F, 8D
Cristina Miller	cmiller@ers.usda.gov	7A, 9B
Troy Mix	mix@udel.edu	4E, 5B
Melody Muldrow	mlmuldrow@ualr.edu	6B, 9B
Silda Nikaj	s.nikaj@tcu.edu	4C, 8A
Frank O'Connor	frank.oconnor@eku.edu	4F, 5B, 8E
Jeffrey O'Hara	jeffreyk.ohara@ams.usda.gov	3C, 4E, 8C
M. Rose Olfert	rose.olfert@usask.ca	6F
Michael Olsson	michael.olsson@his.se	6D, 7D
Mark Partridge	partridge.27@osu.edu	4B, 4D, 5B
Carlianne Patrick	cpatrick@gsu.edu	3A, 4C
John Pender	jpender@ers.usda.gov	4F, 5A, 6B, 8C, 9B
Agnes Perez	acperez@ers.usda.gov	7E
Rodrigo Perez Silva	perezsilva.1@osu.edu	4E, 8B
Santiago Pinto	santiago.pinto@rich.frb.org	3A, 5D, 6A
Jonathan Porat	jonathan.porat@sba.gov	2B
Hyunwoong Pyun	hyppyun@mix.wvu.edu	8F, 9C
Isha Rajbhandari	rajbhandari.5@osu.edu	4D, 5F
Mitch Renkow	renkow@ncsu.edu	3B
Dan Rickman	dan.rickman@okstate.edu	2A, 4B, 5C
Cynthia Rogers	crogers@ou.edu	4C, 5B, 9C
Amanda Ross	amanda.ross@mail.wvu.edu	3A, 4B, 6C, 7B, 8B
Anil Rupasingha	anil.rupasingha@ers.usda.gov	8C, 9A
Juan Tomas Sayago Gomez	juantomas.sayago@gmail.com	4D, 7A, 8F, 9C
Peter Schaeffer	peter.schaeffer@mail.wvu.edu	6B, 7C

William Schaffer	william.schaffer@econ.gatech.edu	3A, 7E
Richard Schwinn	Richard.Schwinn@sba.gov	4A
Miriam Segal	miriam.segal@sba.gov	4A
Wei Shi	wik4@wildcats.unh.edu	3C
David Shideler	dave.shideler@okstate.edu	3C, 8C
Mark Shroder	Mark.D.Shroder@hud.gov	2B
Brian Sloboda	bsloboda@email.phoenix.edu	4E, 6C, 7B
Caleb Stair	castair@mix.wvu.edu	7A, 8B
Judith Stallmann	stallmannj@missouri.edu	2B, 7B
Peter Stenberg	stenberg@ers.usda.gov	3B, 7C, 8C
Heather Stephens	heather.stephens@mail.wvu.edu	3A, 4B, 5F, 7A, 8C
Qing Su	suq1@nku.edu	6D, 7F, 8D
Xiangwei Sun	xiangwsun@gmail.com	3D, 7D
David Swenson	dswenson@iastate.edu	3C
Dawn Thilmany	Dawn.Thilmany@colostate.edu	3C, 5E, 9D
Michael Trebing	mike.trebing@phil.frb.org	6A
Alexandra Tsvetkova	alexa.tsvetkova@gmail.com	5B, 7B, 8E
Sidney Turner	jasamcarl@gmail.com	6D, 8A
Vinicius Vale	vinicius.a.vale@gmail.com	3E, 5E
Laura Varela-Candamio	laura.varela.candamio@udc.es	5C, 7B
Joseph Von Nessen	joey.vonnessen@moore.sc.edu	2A
Philip Watson	pwatson@uidaho.edu	5E, 7E, 9D
Bruce Weber	bruce.weber@oregonstate.edu	3E, 4C, 5B, 7D
Amanda Weinstein	aweinstein@uakron.edu	4F, 5F, 8A
Brian Whitacre	brian.whitacre@okstate.edu	3B, 6C
Nancy White	nancy.white@bucknell.edu	4D, 9C
Deborah Williams	dwilliams@agcenter.lsu.edu	6D
John Winters	jvwinte@okstate.edu	4C, 8B
Timothy Wojan	twojan@ers.usda.gov	9A
Douglas Woodward	douglasp.woodward@gmail.com	3A, 6D
Anthony Yezer	yezer@gwu.edu	8F
Sumei Zhang	sumeizhang@louisville.edu	7F, 8B
Yizhou Zhang	yzhng114@illinois.edu	3E, 7D
Weihoa Zhao	zwh1988@gwmail.gwu.edu	5D, 8D
Xueting Zhao	Xueting.Zhao@mail.wvu.edu	3D, 5D





**Public Policy Analysis:** The BBER has a long history of research and analysis of public finance and public policy issues in West Virginia. Recent projects include studies on cigarette excise taxation, personal income tax policy, and Right to Work policy.

**Industry Studies:** BBER researchers routinely study particular industries for industry and government groups. Our "Coal Production in West Virginia: 2015-2035" has been cited around 100 times by state and national media outlets.

**Legislative Testimony:** BBER economists formally testify before the West Virginia Legislature on a regular basis. In 2014 a BBER economist testified before the U.S. House of Representatives, Subcommittee on Contracting and Workforce.

**Health Policy:** Health policy is of vital interest to our state. For instance, we recently examined the possibility of consolidating the state's public health departments in terms of potential to lower system-wide expenditures and to generate additional revenue.

**Energy Policy:** West Virginia being an energy state, the BBER regularly studies energy policy issues. Recently we published "Government Incentives to Promote Demand for West Virginia Coal."

[www.be.wvu.edu/bber](http://www.be.wvu.edu/bber)

**RUTGERS**

Edward J. Bloustein School  
of Planning and Public Policy

[www.policy.rutgers.edu](http://www.policy.rutgers.edu)  
For additional information, contact  
(848) 932-5475 or [ejb@policy.rutgers.edu](mailto:ejb@policy.rutgers.edu)



**Mission.** Founded in 1961, the Council for Community and Economic Research (C2ER) is a membership organization that promotes excellence in community and economic research by working to improve data availability, enhance data quality, and foster learning about regional economic analytic methods. C2ER accomplishes this mission by:

- Conducting training, advocacy, and research
- Delivering innovative products and services for researchers
- Developing professional networks

**Members.** C2ER's 700 members span a broad range of specialty skills and collectively touch all aspects of state and local community and economic development in the U.S. They include research professionals from:

- Chambers of Commerce
- Utility Companies
- Economic Development Org.
- Workforce Development Boards
- Government Agencies
- Community Development Org.
- Universities
- Consultants & Data Providers

**Products & Services.** The Council for Community and Economic Research (C2ER) produces several proprietary products and provides a variety of services to members and non-members.

**Cost of Living Index:** The quarterly Cost of Living Index compares cost of living differences between urban areas weighted by different categories of consumer expenditures for mid-management households.

**State Business Incentives Database:** The State Business Incentives Database is a searchable database of incentive programs used by states for strategic business attraction. It includes more than 1,900 incentive programs organized according to program category, program type, geographic focus, and business need.

**State Economic Development Expenditures Database:** Collected by aggregating state budget data, the Expenditures Database assesses total resources available for economic development activity across more than 15 functional areas and multiple funding sources using consistent funding categorizations.

**Training / Webinars:** In cooperation with the LMI Institute, C2ER offers a comprehensive training program for economic development and labor market information analysts and develops and delivers customized training.

**Certification:** C2ER's primary professional certification, Certified Community Researcher (CCR), is the industry standard for recognizing excellence in community and economic research. CCRs undertake a rigorous course of training and evaluation to earn this distinction.

**Weekly Update:** The C2ER/LMI Institute Weekly Update is an informational "one-stop" for economic development and labor market researchers.

**Annual Conference:** The C2ER Annual Conference is the primary national conference for economic development, and is held in conjunction with the LMI Annual Forum.

**Technical Assistance:** C2ER aids federal and state agencies by conducting surveys, providing facilitation, and implementing one-on-one skill development in using statistics in data-driven decision-making.



The Local Food Research and Development Division in USDA's Agricultural Marketing Service offers technical support for the development of local food markets. Please visit us at <https://www.ams.usda.gov/services/local-regional> or contact Jeffrey O'Hara at 202 756 2575 for more information.

USDA is an equal opportunity provider and employer.



**West Virginia University is an Equal Opportunity  
Affirmative Action Institution.**

# ECONOMIC IMPACT MODELING



- » **Quantify** your organization's economic value to the local economy
- » **Examine and compare** granular views of selected economies
- » **Customized licenses** available for your academic institution
- » The **pioneer** of automated economic impact modeling



31 | Page



## Economic Research Service

### ERS Research and Information Products

#### Publications

#### Charts

#### Mapping

The USDA's Economic Research Service produces high quality, objective research and analysis on issues affecting food, agriculture, rural America, and the environment. ERS provides free access to its research publications, charts, mapping tools, data sets **and much more** online at [www.ers.usda.gov](http://www.ers.usda.gov), here is a sampling:

#### PUBLICATIONS

##### Research Reports

In-depth analysis of the issues affecting food, agriculture, rural America, and the environment.  
[www.ers.usda.gov/publications](http://www.ers.usda.gov/publications)

##### Outlook Reports

Market analysis and projections of U.S. and world agricultural production, consumption, and trade  
[www.ers.usda.gov/publications/outlook](http://www.ers.usda.gov/publications/outlook)

##### Monthly Magazine – *Amber Waves*

E-zine – [www.ers.usda.gov/amber-waves](http://www.ers.usda.gov/amber-waves)

Tablet app – Get “*Amber Waves*” delivered to your tablet’s mobile bookshelf from iTunes or Google Play

#### CHARTS

##### Ag and Food Statistics: Charting the Essentials

A collection of charts and maps with key agricultural and food information. [www.ers.usda.gov/essentials](http://www.ers.usda.gov/essentials)

##### Charts of Note

A daily chart, online and by email delivery  
[www.ers.usda.gov/ChartsofNote](http://www.ers.usda.gov/ChartsofNote)

#### MAPS

##### Atlas of Rural and Small Town America

Statistics on people, jobs, agriculture, and county types.  
[www.ers.usda.gov/data-products/atlas-of-rural-and-small-town-america.aspx](http://www.ers.usda.gov/data-products/atlas-of-rural-and-small-town-america.aspx)

##### Food Access Research Atlas

Spatial overview of food access indicators for low-income and other neighborhoods by U.S. Census tract.  
[www.ers.usda.gov/data-products/food-access-research-atlas.aspx](http://www.ers.usda.gov/data-products/food-access-research-atlas.aspx)

##### Food Environment Atlas

Compares U.S. counties’ food environment (mix of factors that influence food choices, diet quality, and general fitness of residents). [www.ers.usda.gov/foodatlas](http://www.ers.usda.gov/foodatlas)



Use your research to change the world.

“ Researching and writing your books and papers takes years of work. Make sure it matters outside academia. Join the Scholars Strategy Network to use your knowledge to influence public policy and debates. ”



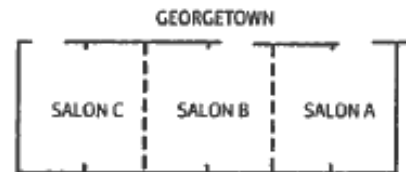
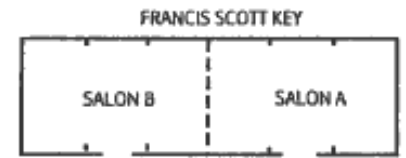
Theda Skocpol  
Victor S. Thomas Professor of  
Government and Sociology,  
Harvard University

[www.scholarsstrategynetwork.org](http://www.scholarsstrategynetwork.org)

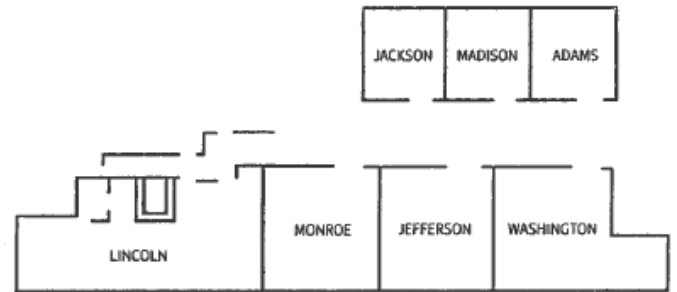
		Thursday	Friday	Saturday
Time		Registration Noon-5:00 PM Francis Scott Key	Registration 7:00 am - 6:00 pm Francis Scott Key	Registration 7:00 am - 2:00 pm Francis Scott Key
From	To			
7:00	7:15			
7:15	7:30			
7:30	7:45			
7:45	8:00			
8:00	8:15			
8:15	8:30			
8:30	8:45			
8:45	9:00			
9:00	9:15			
9:15	9:30			
9:30	9:45			
9:45	10:00			
10:00	10:15			
10:15	10:30			
10:30	10:45			
10:45	11:00			
11:00	11:15			
11:15	11:30			
11:30	11:45			
11:45	12:00			
12:00	12:15			
12:15	12:30			
12:30	12:45			
12:45	1:00			
1:00	1:15			
1:15	1:30			
1:30	1:45			
1:45	2:00			
2:00	2:15			
2:15	2:30			
2:30	2:45			
2:45	3:00			
3:00	3:15			
3:15	3:30			
3:30	3:45			
3:45	4:00			
4:00	4:15			
4:15	4:30			
4:30	4:45			
4:45	5:00			
5:00	5:15			
5:15	5:30			
5:30	5:45			
5:45	6:00			
6:00	6:15			
6:15	6:30			
6:30	6:45			
6:45	7:00			
7:00	7:15			
7:15	7:30			
7:30	7:45			
7:45	8:00			
8:00	8:15			
8:15	8:30			
8:30	8:45			
8:45	9:00			

## Key Bridge Marriott Floor Plan

### LOWER LOBBY LEVEL



### THIRD FLOOR



### FOURTEENTH FLOOR

#### CAPITOL VIEW BALLROOM

